

# IP CAM



# Quick Reference

[www.ttipcam.com](http://www.ttipcam.com)

- Step-by-Step Instruction on how to view IP Cam Live demo

### —— Hardware Install

1. Connection power DC 12V, 1A
2. Connection RJ-45 Network Cable.



### —— Software Setup

1. Download the IPCam\_Loader software
- \* Please open our website [www.ttipcam.com](http://www.ttipcam.com)

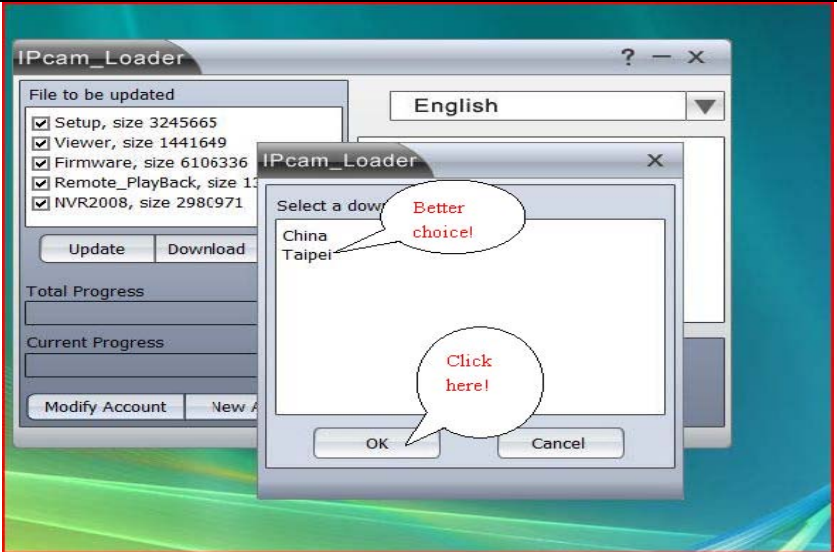
## TT IP CAM Quick Reference

The screenshot shows the TT IP CAM website. The top navigation bar includes: Home | Product | Support & Download | Live Online | Contacts Us | About TT | 中文版. The left sidebar has categories: Easy IP Camera (with sub-items: CCD IP Camera, IP Speed Dome, Video Server), CCTV Camera, and 中文网站. The main content area features a 'CCD IP Camera' image and a 'TT IPCam\_Loader' software interface. The loader window shows a list of files to be updated: Setup (3245665), Viewer (1441649), Firmware (6106336), Remote\_PlayBack (1343384), and NVR2008 (2980971). The 'Viewer' checkbox is checked. Below the list are 'Update', 'Download', and 'New Account' buttons. A speech bubble points to the 'Download' button with the text 'Here'. To the right, there is a 'LIVE DEMO' link, a 'Download' link, and a 'sign up for our Newsletter' button. Below the main content, there is a 'Software Setup' section with a list of links: IPcam: What is Port Mapping?, DVR: Why should I register the camera?, Media Server: Support multiple concurrent users, PDA: View on PDA Phone, Embedded Webpage: Embed live video onto webpage, Video Server: Transfer CCTV to an IPcam, and a '...' link. A 'TT IP Cam Loader' section below it lists: Version 4.0 for Windows(20080220), Downloads all necessary files, Downloads the latest Viewer, Downloads the latest V Setup, and Downloads the latest Firmware. A 'Download' button with a download icon is also present.

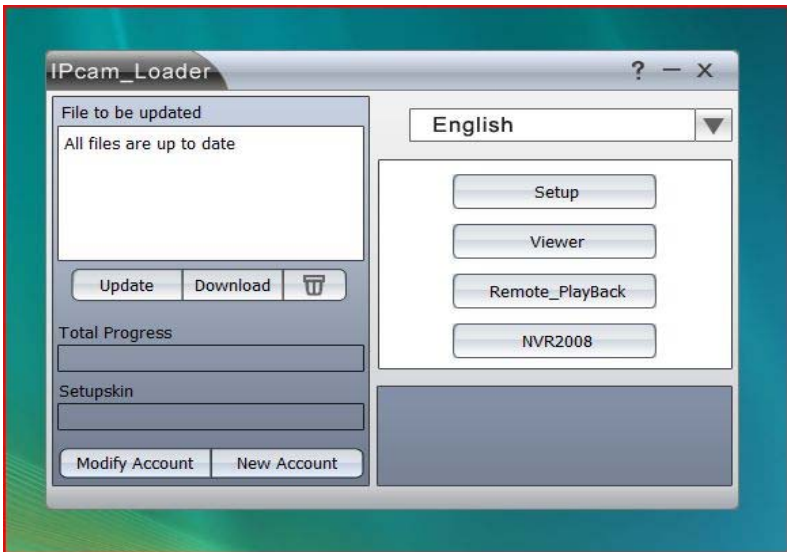
Click “Download” then you download the software

2. Install the IPCam\_Loader program (What you need to do is to follow the program until the installation finish.)
3. Run the IPCam\_Loader program
4. Choose “Taipei” server to download all the programs.

The screenshot shows the IPCam\_Loader software window. It has a title bar with a question mark, minus, and close button. The window contains a 'File to be updated' section with a list of files and their sizes. The 'Viewer' checkbox is checked. Below the list are 'Update', 'Download', and 'New Account' buttons. A speech bubble points to the 'Update' button with the text '1. Click here to check update'. Another speech bubble points to the 'Viewer' checkbox with the text '2. Check all the programs to download'. A third speech bubble points to the 'Download' button with the text '3. click here'. The window also has a language dropdown menu set to 'English' and progress bars for 'Total Progress' and 'Current Progress'.



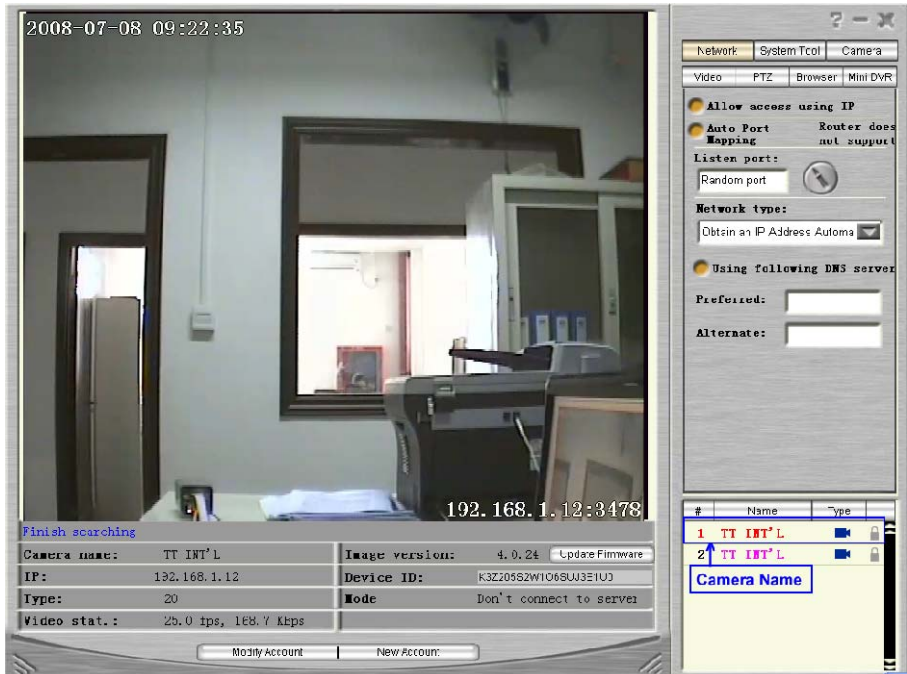
After finish Download, you will see all the software on the right side as follows:



5. Launch "Viewer" program Please use the following

information: **Account ID: ttctv Password: 123456 Server: Taipei** (please choose Taipei. Due to too much blocking in China, please use Taipei server).

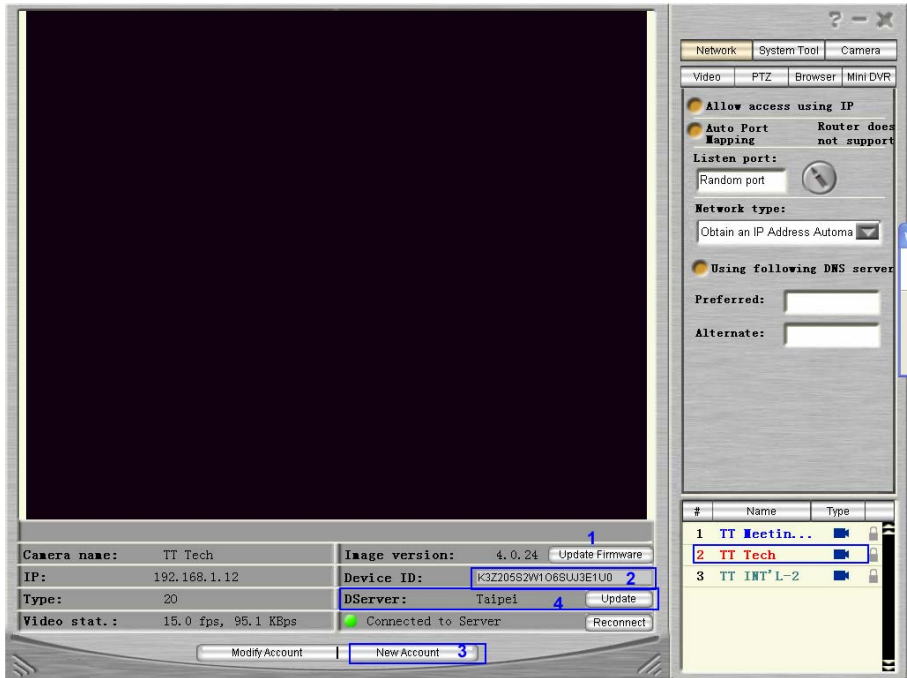
- click "Setup", then double click "Camera Name" you can seeing video



Until Now, you can view all the live IP Cameras online and control the PTZ Speed dome camera also.

## 7. Registration camera

Registration is for the purpose to view the camera by log-in a meaningful username/pwd instead of remembering IP addresses. Besides, it is necessary when camera has no fixed Public IP connecting to the internet.



- (0) Make sure the camera is connected to internet.
- (1) Run Setup utility, double click on the name of specific camera to get the video and data.
- (2) Copy the Device ID by Ctrl+C keys.
- (3) Click on New Account and get the registration webpage.
  - <3.1> select the most suited Dserver.
  - <3.2> Paste the Device ID by Ctrl+V keys
  - <3.3> Key-in name /pwd and remember them. (refer to Setup user's manual to create sub-account)
- (4) Select the same server as <3.1> on Setup interface.

## Management System

### Sign Up

---

Server:

ID#:

Account ID:  Account ID may consist of a-z, 0-9 and underscores, and must be less than 20 characters.

Password:  Password must not be less than 4 characters, and can't contain blank space.

Re-type password:

Security question:  If you forget your password, you can get it through answering this question.

Your answer:

### —Application Software

IP Loader includes 4 Softwares: Setup; Viewer; Remote\_PlayBack; NVR 2008

#### 1. Setup

- A. Setup is used to set IP Camera up in LAN
- B. For more detailed information, please refer to

#### 2. Viewer

- A. Viewer is used to view internet cameras, through,

- Account Name And password you register on our server
- B. View local ip cameras through IP Address
- C. Viewer software is a one to one software

### **3. Remote\_PlayBack**

Remote\_playback is used to serve as client software to NVR 2008

### **4. NVR 2008**

NVR 2008 is used to manage both local and internet IP Cameras, It is very powerful

For more detailed information about our software, please refer to the software manuals which you can download from our website:

[www.ttipcam.com](http://www.ttipcam.com)

Thank you very much for your interest in our products and kind attention!